



Pila LED tube 1500mm 20W 840 G13

Product data

• General Characteristics

Cap-Base	G13 [Medium Bi-Pin Fluorescent]
Main Application	Industrial
Nominal Lifetime (Nom)	25000 h
Switching Cycle	50000X
B50L70	25000 h

• Light Technical Characteristics

Color Code	840 [CCT of 4000K]
Beam Angle	240 °
Luminous Flux (Nom)	2000 lm
Luminous Flux (Rated) (Nom)	2000 lm
Rated Beam Angle	240 °
Correlated Color Temperature (Nom)	4000 K
Color consistency	<6
Color Rendering Index (Nom)	80
LLMF - end nominal lifetime	70 %

• Electrical Characteristics

Input Frequency	50 to 60 Hz
Power (Rated) (Nom)	20 W
Lamp Current (Max)	92 mA
Lamp Current (Min)	81 mA
Starting Time (Nom)	0.5 s
Warm Up Time To 60% Light (Nom)	instant full light
Power Factor (Nom)	0.9
Voltage (Nom)	220-240 V

• Temperature Characteristics

T-Ambient (Max)	45 °C
T-Ambient (Min)	-20 °C
T-Storage (Max)	65 °C
T-Storage (Min)	-40 °C
T-Case Maximum (Nom)	65 °C

• Controls and Dimming

Dimmable	No
----------	----

• Mechanical and Housing

Product Length	1500 mm
----------------	---------

• Approval and Application

Energy Saving Product	Yes
Suitable For Accent Lighting	No
Energy Efficiency Label (EEL)	A+
Approval Marks	CE marking RoHS compliance KEMA Keur certificate
Energy Consumption kWh/1000 h	20 kWh

• Product Data

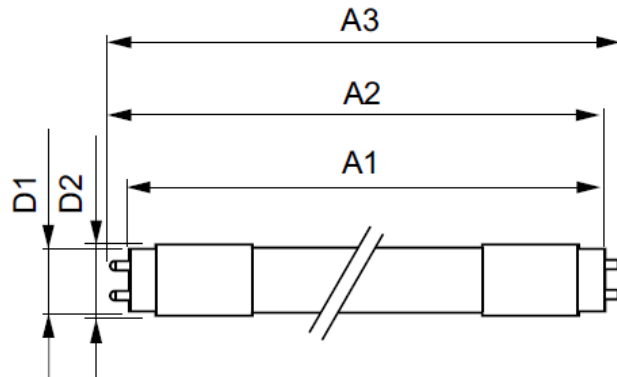
Full product code	871869673458200
Order product name	Pila LED tube 1500mm 20W 840 G13
EAN/UPC - Product	8718696734582
Order code	929001221462
Numerator - Quantity Per Pack	1
Numerator - Packs per outer box	10
Material Nr. (12NC)	929001221462
Net Weight (Piece)	0.275 kg

Warnings and Safety

- NOTES: The overall energy efficiency and light distribution of any installation that uses these lamps are determined by the design of the installation

Dimensional drawing

Product	D1	D2	A1	A2	A3
Pila LED tube 1500mm 20W 840 G13	25.7 mm	28 mm	1500 mm	1507.1 mm	1514.2 mm



Photometric data

